

C. P. Loizou

**Quality Evaluation of
Ultrasound Imaging of the
Carotid Artery**

¹C.P. Loizou ^{*}, ²C.S. Pattichis, ³M. Pantziaris, ³T. Tyllis, ⁴A. Nicolaides,

¹ Dep. of Computer Science, Intercollege, P. O. Box 51604, CY-3507 Limassol- Cyprus, e-mail: christosl@lim.Intercollege.ac.cy

² Dep. of Computer Science, University of Cyprus, Nicosia-Cyprus, e-mail: pattichi@ucy.ac.cy

³ Cyprus Institute of Neurology and Genetics, Nicosia-Cyprus, e-mail: pantziari@cing.ac.cy, tyllisth@cytanet.com.cy, anicolai@cing.ac.cy

⁴ Vascular Screening and Diagnostic Center, Nicosia-Cyprus, e-mail: anicolai@cytanet.com.cy

^{*}Corresponding Author: Intercollege, 92 Ayias Phylaxeos Str., P.O.Box 51604, CY-3507 Limassol-Cyprus. Phone (+357) 25-381180, Fax: (+357) 25-386982, e-mail: christosl@lim.Intercollege.ac.cy

Submitted in Recent Advances in Diagnostic and Therapeutic Ultrasound Imaging for Medical Applications, Springer, Ed. By J.S. Suri, Springer, Atrec House, MA, USA, to be published in 2006

Quality Evaluation of Ultrasound Imaging of the Carotid Artery

1.1 INTRODUCTION

Ultrasound imaging is a powerful non-invasive diagnostic imaging modality in medicine [1]. However, like all medical imaging modalities, that exhibit various image artifacts, ultrasound is subject to a locally correlated multiplicative noise, called speckle, which degrades image quality and compromises diagnostic confidence [1]. For medical images, quality can be objectively defined in terms of performance in clinically relevant tasks such as lesion detection and classification, where typical tasks are the detection of an abnormality, the estimation of some parameters of interest, or the combination of the above [2]. Most studies today have assessed the equipment performance by testing diagnostic performance of multiple experts, which also suffers from intra- and inter-observer variability. Although this is the most important method of assessing the results of image degradation, few studies have attempted to perform physical measurements of degradation [3]. This chapter was also published in a longer paper in [4].

Image quality is important when evaluating or segmenting atherosclerotic carotid plaques [5], [6] or the intima-media-thickness (IMT) in the carotid artery [7], where speckle obscures subtle details [8] in the image. Speckle, which is a multiplicative noise, is the major performance-limiting factor in visual lesion detection in ultrasound imaging, that makes the signal or lesion difficult to detect [3], [6]-[8]. In recent studies [8], [4] we have shown that normalization and speckle reduction improves the visual perception of the expert in the assessment of ultrasound imaging of the carotid artery. Traditionally, suspected plaque formation is confirmed using color blood flow imaging, where the types of the plaque were visually identified, and the delineations of the plaque and IMT were manually made by

medical experts [6], [7].

In order to be able to design accurate and reliable quality metrics, it is necessary to understand what quality means to the expert. An expert's satisfaction when watching an image depends on many factors. One of the most important is of course image content and material. Research made in the area of image quality showed, that this depends on many parameters, such as: viewing distance, display size, resolution, brightness, contrast, sharpness, colorfulness, naturalness, and other factors [9].

It is also important to note that there is often a difference between fidelity (the accurate reproduction of the original on the display) and perceived quality. Sharp images with high contrast are usually more appealing to the average expert. Likewise, subjects prefer slightly more colorful and saturated images despite realizing that they look somewhat unnatural [10]. For studying visual quality some of the definitions above should be related to the human-visual system. Unfortunately, subjective quality may not be described by an exact figure, due to its inherent subjectivity, it can only be described statistically. Even in psychological threshold experiments, where the task of the expert is to give a yes or no answer, there exists a significant variation between expert's contrast sensitivity functions and other critical low-level visual parameters. When speckle noise is apparent in the image, the expert's differing experiences with noise are bound to lead to different weightings of the artifact [9]. Researchers showed that experts and non-experts, with respect to image quality, examine different critical image characteristics to form their final opinion [11].

The objective of this study was to investigate the usefulness of image quality evaluation based on image quality metrics, and visual perception, in ultrasound imaging of the carotid artery after normalization and speckle reduction filtering. For this task we have evaluated the quality of ultrasound imaging of the carotid artery on two different ultrasound scanners, the HDI

ATL-3000 and the HDI ATL-5000, before and after speckle reduction, after image normalization, and after image normalization and speckle reduction filtering. Statistical and texture analysis was carried out on the original and processed images and these findings were compared with the visual perception, carried out by two experts.

1.2 METHODOLOGY

1.2.1 Ultrasound imaging scanners

The images used in this study, were captured using two different ultrasound scanners, the ATL HDI-3000 and the ATL HDI-5000 (Advanced Technology Laboratories, Seattle, USA).

The ATL HDI-3000 ultrasound scanner is equipped with a 64 elements fine pitch high-resolution, 38 mm broadband array, a multi element ultrasound scan head with an operating frequency range of 4-7 MHz, an acoustic aperture of 10x8 mm and a transmission focal range of 0.8-11 cm [12].

The ATL HDI-5000 ultrasound scanner is equipped with a 256 elements fine pitch high-resolution 50 mm linear array, a multi element ultrasound scan head with an extended operating frequency range of 5-12 MHz and it offers real spatial compound imaging. The scanner increases the image clarity using SonoCT imaging by enhancing the resolution and borders, and interface margins are better displayed. Several tests made by the manufacturer showed that, the ATL HDI-5000 scanner was overall superior to conventional two dimensional imaging systems, primarily because of the reduction of speckle, contrast resolution, tissue differentiation, and the image was visually better [12].

The settings for the two ultrasound scanners were the same during the acquisition of all images in this study. The images were captured with the ultrasound probe positioned at right angles to the adventitia and the image was magnified, or the depth was adjusted so that the

plaque would fill a substantial area of the image. Digital images were resolution normalized at 16.66 pixels/mm (see image normalization section). This was carried out due to the small variations in the number of pixels per mm of image depth (i.e for deeply situated carotid arteries, image depth was increased and therefore digital image spatial resolution would have decreased) and in order to maintain uniformity in the digital image spatial resolution [13]. B-mode scan settings were adjusted at 170 dB, so that the maximum dynamic range was used with a linear post-processing curve. In order to ensure that a linear-post-processing curve is used, these settings were pre-selected (by selecting the appropriate start-up presets from the software) and were included in the part of the start-up settings of the ultrasound scanner. The position of the probe was adjusted so that the ultrasonic beam was vertical to the artery wall. The time gain compensation, TGC, curve was adjusted, (gently sloping), to produce uniform intensity of echoes on the screen, but it was vertical in the lumen of the artery where attenuation in blood was minimal, so that echogenicity of the far wall was the same as that of the near wall. The overall gain was set so that, the appearance of the plaque was assessed to be optimal, and slight noise appeared within the lumen. It was then decreased so that at least some areas in the lumen appeared to be free of noise (black).

1.2.2 Material

A total of 80 symptomatic B-mode longitudinal ultrasound images from identical vessel segments of the carotid artery bifurcation, were acquired from each ultrasound scanner. The images were recorded digitally on a magneto optical drive with a resolution of 768x576 pixels with 256 gray levels.

The images were recorded at the Institute of Neurology and Genetics, in Nicosia, Cyprus, from 32 female and 48 male symptomatic patients aged between 26 and 95 years old, with a

mean age of 54 years old. These subjects were at risk of atherosclerosis, which have already developed clinical symptoms, such as a stroke or a transient ischemic attack.

In addition, 10 symptomatic ultrasound images of the carotid artery representing different types of atherosclerotic carotid plaque formation with irregular geometry typically found in this blood vessel were acquired from each scanner.

Plaques may be classified into the following types: i) type I: uniformly echolucent (black), where bright areas occupy less than 15% of the plaque area, ii) type II: predominantly echolucent, where bright echoes occupy 15-50% of the plaque area, iii) type III: predominantly echogenic, where bright echoes occupy 50-85% of the plaque area, iv) type IV: uniformly echogenic, where bright echoes occupy more than 85% of the plaque area, and v) type V: calcified cap with acoustic shadow so that the rest of the plaque cannot be visualized [5], [6]. In this study the plaques delineated were of type II, III and IV because it is easier to make a manual delineation since the fibrous cap, which is the border between blood and plaque, is more easily identified. If the plaque is of type I, borders are not visible well. Plaques of type V produce acoustic shadowing and the plaque is also not visible well.

1.2.3 Speckle reduction

The linear scaling speckle reduction filter (*lsmv-linear scaling mean variance*) utilizing the mean and the variance of a pixel neighborhood, first introduced in [14] and implemented by our group, was used in this study. The *lsmv* filter was also used in other studies for the speckle reduction filtering of ultrasound carotid artery images and forms an output image as follows [8], [14], [15]:

$$f_{i,j} = \bar{g} + k_{i,j}(g_{i,j} - \bar{g}) \quad (1.1)$$

where $f_{i,j}$ is the new estimated noise-free pixel value in the moving window, $g_{i,j}$, is the noisy pixel value in the middle of the moving window, \bar{g} is the local mean value of an $M \times N$ region surrounding and including pixel $g_{i,j}$, $k_{i,j}$, is a weighting factor with $k_{i,j} \in [0..1]$, and i, j , are the pixel absolute pixel coordinates. The factor $k_{i,j}$, is a function of the local statistics in a moving window and may be derived as [14]:

$$k_{i,j} = \sigma_g^2 / (\bar{g}^2 \sigma_g^2 + \sigma_n^2) \quad (1.2)$$

The values σ_g^2 , and σ_n^2 , represent the variance in moving window and the variance of the noise in the whole image respectively. The noise variance, σ_n^2 , may be calculated for the logarithmically compressed image, by computing the average noise variance over a number of windows with dimensions considerable larger than the filtering window. In each window the noise variance is computed as [8]:

$$\sigma_n^2 = \sum_{i=1}^p \sigma_p^2 / \bar{g}_p \quad (1.3)$$

where σ_p^2 , and \bar{g}_p , are the variance and mean of the noise in the selected windows respectively and p , is the index covering all windows in the whole image [16]. If the value of $k_{i,j}$, is 1 (in edge areas) this will result to an unchanged pixel, whereas a value of 0 (in uniform areas) replaces the actual pixel by the local average, \bar{g} , over a small region of interest (see (1)). It was shown that speckle in ultrasound images can be approximated by the Rayleigh distribution [17], [18], [19] which is implicitly contained by σ_n^2 in (2) and (3). Speckle reduction filtering was applied on the images using the *lsmv* filter, which was applied for four times iteratively on the images using a 7×7 moving pixel window without

overlapping, as this produced the best results [8].

1.2.4 Image normalization

The need for image standardization or post-processing has been suggested in the past, and normalization using only blood echogenicity as a reference point has been applied in ultrasound images of carotid artery [5]. Brightness adjustments of the ultrasound images has been used in this study, as this has been shown to improve image compatibility, by reducing the variability introduced by different gain settings and facilitate ultrasound tissue comparability [5], [13].

The images were normalized manually by linearly adjusting the image so that the median gray level value of the blood was 0-5, and the median gray level of the adventitia (artery wall) was 180-190. The scale of the gray level of the images ranged from 0-255 [20]. This normalization using blood and adventitia as reference points was necessary in order to extract comparable measurements in case of processing images obtained by different operators or different equipment [20].

The image normalization procedure performed in this study was implemented in MATLAB software (version 6.1.0.450, release 12.1, May 2001, by The Mathworks, Inc.), and tested on a Pentium III desktop computer, running at 1.9 GHz, with 512 MB of RAM memory. The same software and computer station were also used for all other methods employed in this study.

1.2.5 Statistical and texture analysis

Texture provides useful information, which is used by humans for the interpretation and analysis of many types of images. It may provide useful information about object characterization in ultrasound images [21]. The following statistical and texture features,

(SF), were extracted from the original, and the processed images to evaluate their usefulness based on speckle reduction filtering, image normalization and visual perception evaluation:

1.2.5.1 Statistical features (SF) [21]

1. Mean
2. Median
3. Variance (σ^2)
4. Skewness (σ^3)
5. Kurtosis (σ^4), and
6. Speckle index ($C = \sigma^2 / \bar{g}$).

1.2.5.2 Spatial Gray Level Dependence Matrix-range values (SGLDM)

Selected features as proposed by Haralick et al. [22], measured in four directions, namely in the east, west, north and south direction of a pixel neighborhood. The range of these four values were computed for each feature where the following features were computed:

1. Entropy
2. Contrast and
3. Angular Second Moment (ASM).

The Wilcoxon matched-pairs signed rank sum test was also used in order to determine if a significant (S) difference or not (NS), exists between the results of the visual perception evaluation made by the two experts, and the statistical and texture features, at $p < 0.05$. The test was applied on all the 80 images of the carotid artery for the cases NF, DS, N and NDS.

1.2.6 Image quality and evaluation metrics

Differences between the original, $g_{i,j}$, and the processed, $f_{i,j}$, images were evaluated using

the following image quality and evaluation metrics, which were used as statistical measures. The basic idea is to compute a single number that reflects the quality of the processed image. Processed images with higher metrics have been evaluated to be better [23]. The following measures, which are easy to compute and have clear physical meaning, were computed

1.2.6.1 Normalized mean square error (*MSE*)

The *MSE* measures the quality change between the original and processed image in an $M \times N$ window [24]:

$$MSE = \frac{1}{MN} \sum_{i=1}^M \sum_{j=1}^N \left(\frac{g_{i,j} - f_{i,j}}{lpg_{i,j}} \right)^2 \quad (1.4)$$

where $lpg_{i,j}$, is the low pass filtered images of the original image, $g_{i,j}$. For the case that, $lpg_{i,j}$, is equal to zero, its value is replaced with the smallest gray level value in the image. The *MSE*, has been widely used to quantify image quality and when is used alone, it does not correlate strongly enough with perceptual quality. It should be used therefore together with other quality metrics and visual perception [11], [24].

1.2.6.2 Normalized root mean square error (*RMSE*)

The *RMSE* is the square root of the squared error averaged over an $M \times N$ array [25]:

$$RMSE = \sqrt{\frac{1}{MN} \sum_{i=1}^M \sum_{j=1}^N \left(\frac{g_{i,j} - f_{i,j}}{lpg_{i,j}} \right)^2} . \quad (1.5)$$

The popularity of *RMSE* arises mostly from the fact that is in general the best approximation of the standard error.

1.2.6.3 Normalized error summation in the form of the Minkowski metric (*Err*)

The *Err* is the norm of the dissimilarity between the original and the processed images [3], [24], [26]:

$$Err = \left(\frac{1}{MN} \sum_{i=1}^M \sum_{j=1}^N \left| \frac{g_{i,j} - f_{i,j}}{lp g_{i,j}} \right|^\beta \right)^{1/\beta} \quad (1.6)$$

computed for $\beta=3$ (Err_3) and $\beta=4$ (Err_4). For $\beta=2$, the *RMSE*, is computed as in (5), whereas for $\beta=1$, the absolute difference, and for $\beta=\infty$ the maximum difference measure.

1.2.6.4 Normalized geometric average error (*GAE*)

It is a measure, which shows if the transformed image is very bad [27], and it is used to replace or complete *RMSE*. It is positive only if every pixel value is different between the original and the transformed image. The *GAE*, is approaching zero, if there is a very good transformation (small differences) between the original and the transformed image, and high vice versa. This measure is also used for tele-ultrasound, when transmitting ultrasound images and is defined as:

$$GAE = \left(\prod_{i=1}^N \prod_{j=1}^M \sqrt{\frac{g_{i,j} - f_{i,j}}{lp g_{i,j}}} \right)^{1/NM}. \quad (1.7)$$

1.2.6.5 Normalized signal-to-noise ratio (*SNR*)

The *SNR* [28] is given by:

$$SNR = 10 \log_{10} \frac{\sum_{i=1}^M \sum_{j=1}^N \left(\frac{g_{i,j}^2 + f_{i,j}^2}{lp g_{i,j}} \right)}{\sum_{i=1}^M \sum_{j=1}^N \left(\frac{g_{i,j} - f_{i,j}}{lp g_{i,j}} \right)^2}. \quad (1.8)$$

The SNR , $RMSE$, and Err , prove to be very sensitive tests for image degradation, but there are completely non-specific. Any small change, in image noise, filtering, and transmitting preferences would cause an increase of the above measures.

1.2.6.6 Normalized peak signal-to-noise ratio (PSNR)

The PSNR [28] is computed by:

$$PSNR = -10 \log_{10} \frac{MSE}{s^2} \quad (1.9)$$

where s , is the maximum intensity in the original image. The $PSNR$ is higher for a better-transformed image and lower for a poorly transformed image. It measures image fidelity that is how closely the transformed image resembles the original image.

1.2.6.7 Mathematically defined universal quality index (Q)

It models any distortion as a combination of three different factors [3], which are: loss of correlation, luminance distortion, and contrast distortion and is derived as:

$$Q = \frac{\sigma_{gf}}{\sigma_f \sigma_g} \frac{2\bar{f}\bar{g}}{(\bar{f})^2 + (\bar{g})^2} \frac{2\sigma_f \sigma_g}{\sigma_f^2 + \sigma_g^2}, \quad -1 < Q < 1 \quad (1.10)$$

where \bar{g} , and \bar{f} represent the mean of the original and transformed image values, with their standard deviations, σ_g , and σ_f , of the original and transformed values of the analysis window, and σ_{gf} , represents the covariance between the original and transformed images. Q is computed for a sliding window of size 8x8 without overlapping. Its highest value is 1 if $g_{i,j} = f_{i,j}$, while its lowest value is -1 if $f_{i,j} = 2\bar{g} - g_{i,j}$.

1.2.6.8 Structural similarity index (SSIN)

The SSIN between two images [26], which is a generalization of (10) is given by:

$$SSIN = \frac{(2\bar{g}\bar{f} + c_1)(2\sigma_{gf} + c_2)}{(\bar{g}^2 + \bar{f}^2 + c_1)(\sigma_g^2 + \sigma_f^2 + c_2)} \quad -1 < Q < 1 \quad (1.11)$$

where $c_1 = 0.01dr$, and $c_2 = 0.03dr$, with $dr = 255$, representing the dynamic range of the ultrasound images. The range of values for the SSIN lies between -1 , for a bad and 1 for a good similarity between the original and transformed images respectively. It is computed, similarly to the Q measure, for a sliding window of size 8×8 without overlapping.

1.2.7 Visual perception evaluation

Visual evaluation can be broadly categorized as the ability of an expert to extract useful anatomical information from an ultrasound image. The visual evaluation varies of course from expert to expert and is subject to the expert's variability [2]. The visual evaluation, in this study, was carried out according to the ITU-R recommendations with the Double Stimulus Continuous Quality Scale (DSCQS) procedure [27]. All the visual evaluation experiments were carried out at the same workstation under indirect fluorescent lighting typical of an office environment. Two vascular experts evaluated the images. The vascular experts, an angiologist and a neurovascular specialist, were allowed to position themselves comfortably with respect to the viewing monitor, where a typical distance of about 50 cm was kept. Experts in real-life applications employ a variety of conscious and unconscious strategies for image evaluation, and it was our intent to create an application environment as close as possible to the real one. The two vascular experts evaluated 80 ultrasound images recorded from each ultrasound scanner before and after speckle reduction, after image normalization, and after normalization and speckle reduction filtering.

The two vascular experts evaluated the area around the distal common carotid, between 2-3 cm before the bifurcation and the bifurcation. It is known that measurements taken from the far wall of the carotid artery are more accurate than those taken from the near wall [5], [17]. Furthermore, the experts were examining the image in the lumen area, in order to identify the existence of a plaque or not. The primary interest of the experts was the area around the borders between blood and tissue of the carotid artery, and how much better they can differentiate blood from carotid wall, intima media or plaque surface.

For each image, an individual expert is asked to assign a score in the one to five scale, corresponding to low and high subjective visual perception criteria. Five was given to an image with the best visual perception. Therefore the maximum score for a procedure is 400, if the expert assigned the score of five for all the 80 images. For each procedure, the score was divided by four to be expressed in percentage format. The experts were allowed to give equal scores to more than one image in each case. For each preprocessing procedure the average score was computed.

1.3 Results

Figure 1-1 illustrates the original, NF, speckle reduction, DS, normalized, N, and normalized speckle reduction, NDS, images for the two ultrasound image scanners. It is shown that the images for the ATL HDI-3000 scanner have greater speckle noise compared to the ATL HDI-5000 images. Moreover the lumen borders and the IMT are more easily identified with the ATL HDI-5000 on the N and NDS images.

Table 1-1 shows the results in percentage (%) format for the visual perception evaluation made by the two vascular experts on the two scanners. It is clearly shown that the highest scores are given for the NDS images, followed by the N, DS, and NF images for both

scanners from both experts.

The results of the Wilcoxon rank sum test for the visual perception evaluation, performed between the NF-DS, NF-N, NF-NDS, DS-N, DS-NDS, and N-NDS images, for the first and second observer on the ATL HDI-3000 and the ATL HDI-5000 scanner respectively. The results of the Wilcoxon rank sum test for the visual perception evaluation were mostly significantly different (S) showing large intra-observer and inter-observer variability for the different preprocessing procedures (NF-DS, NF-N, NF-NDS, DS-N, DS-NDS, N-NDS) for both scanners. Not significantly (NS) different values were obtained for both scanners, after normalization and speckle reduction filtering, showing that this improves the optical perception evaluation.

Table 1-2 presents the results of the statistical and texture features for the 80 images recorded from each image scanner. The upper part of Table 1-2 shows that, the effect of speckle reduction filtering, DS, for both scanners was similar, that is the mean and the median were preserved, the standard deviation was reduced, the skewness and the kurtosis were reduced, and the speckle index was reduced, where it is shown that the gray-value line profiles are smoother and less flattened). Furthermore, Table 1-2 shows that some statistical measures like the skewness, kurtosis, and speckle index, were better than the original, NF, and speckle reduction, DS, images after normalization, N, for both scanners, and were even better after normalization and speckle reduction, NDS. However the mean was increased for N, and NDS images for both scanners.

In the bottom part of Table 1-2, it is shown that the entropy was increased and the contrast was reduced significantly in the cases of DS and NDS for both scanners. The entropy was slightly increased and the contrast was slightly reduced in the cases of N images for both scanners. The ASM was reduced for the DS images for both scanners and for the NDS images

for the ATL HDI-5000 scanner.

The results of the Wilcoxon rank sum test for the statistical and texture features (see Table 1-2), performed on the NF-DS, NF-N, NF-NDS, DS-N, DS-NDS, and N-NDS images on the ATL HDI-3000 scanner. No statistically significant difference was found between the most of the metrics when performing the non-parametric Wilcoxon rank sum test at $p < 0.05$, between the original, NF and speckle reduction, DS, the original, NF and normalized, N, and the original, NF and normalized speckle reduction, NDS features for both scanners. Statistical significant different values were obtained for the ASM, contrast, and entropy.

Furthermore, Table 1-2 shows that, the entropy that is a measure of the information content of the image was higher for the ATL HDI-5000 in all the cases. The ASM that is a measure of the inhomogeneity of the image is lower for the ATL HDI-5000 in the cases of the DS and NDS images. Furthermore, the entropy, and the ASM were more influenced from speckle reduction than normalization as, they are reaching their best values after speckle reduction filtering.

Table 1-3 illustrates the image quality evaluation metrics, for the 80-ultrasound images recorded from each image scanner, between the NF-DS, NF-N, NF-NDS, and N-NDS images. Best values were obtained for the NF-N images with lower RMSE, Err3, and Err4, higher SNR, and PSNR for both scanners. The GAE was 0.00 for all cases, and this can be attributed to the fact that the information between the original and the processed images remains unchanged. Best values for Q and SSIN were obtained for the NF-N images for both scanners, whereas best values for SNR were obtained for the ATL HDI-3000 scanner on the NF-N images.

Table 1-3 shows that the effect of speckle reduction filtering was more obvious on the ATL

HDI-3000 scanner, which shows that the ATL HDI-5000 scanner produces images with lower noise and distortion. Moreover, it was obvious that all quality metrics presented here are equally important for image quality evaluation. Specifically, for the most of the quality metrics, better measures were obtained between the NF-N, followed by the NF-NDS, and N-NDS images for both scanners. It is furthermore important to note that a higher PSNR (or equivalently, a lower RMSE) does not necessarily imply a higher subjective image quality, although they do provide some measure of relative quality.

Furthermore, the two experts evaluated visually 10 B-mode ultrasound images with different types of plaque [5], by delineating the plaque at the far wall of the carotid artery wall. The visual perception evaluation, and the delineations made by the two experts, showed that the plaque may be better identified on the ATL HDI-5000 scanner after normalization and speckle reduction, NDS, whereas the borders of the plaque and the surrounding tissue may be better visualized on the ATL HDI-5000 when compared with the ATL HDI-3000 scanner.

Table 1-4 summarizes the image quality evaluation results of this study, for the visual evaluation (Table 1-1), the statistical and texture analysis (Table 1-2), and the image quality evaluation metrics (Table 1-3). A double plus sign in Table 1-4 indicates very good performance, while a single plus sign a good performance. Table 1-4 can be summarized as follows: i) the NDS images were rated visually better on both scanners, ii) the NDS images showed better statistical and texture analysis results on both scanners, iii) the NF-N images on both scanners showed better image quality evaluation results, followed by the NF-DS on the ATL HDI-5000 scanner and the NF-DS on the HDI ATL-3000 scanner, iv) the ATL HDI-5000 scanner images have considerable higher entropy than the ATL HDI-3000 and thus more information content. However, based on the visual evaluation by the two experts, both scanners were rated similarly.

1.4 DISCUSSION

Normalization and speckle reduction filtering are very important preprocessing steps in the assessment of atherosclerosis in ultrasound imaging. We have therefore, investigated the usefulness of image quality evaluation, in 80 ultrasound images of the carotid bifurcation, based on image quality metrics and visual perception after normalization and speckle reduction filtering using two different ultrasound scanners (ATL HDI-3000, and ATL HDI-5000). Specifically, the images were evaluated, before, and after speckle reduction, after normalization, and after normalization and speckle reduction filtering. The evaluation was based on visual evaluation by two experts, statistical and texture features, image normalization, speckle reduction, as well as based on image quality evaluation metrics. It is noted that to the best of our knowledge, there are no other studies found in the literature for evaluating ultrasound image quality, based on speckle reduction filtering and normalization performed on carotid artery images, acquired by two different ultrasound scanners.

1. The main findings of this study can be summarized as follows:
2. The NDS, images were rated visually better on both scanners
3. The NDS images showed better statistical and texture analysis results on both scanners
4. Better image quality evaluation results were obtained between the NF-N images for both scanners, followed by the NF-DS images for the ATL HDI-5000 scanner and the NF-DS on the HDI ATL-3000 scanner
5. The ATL HDI-5000 scanner images have considerable higher entropy than the ATL HDI-3000 scanner and thus more information content. However, based on the visual evaluation by the two experts, both scanners were rated similarly.

It was shown that normalization and speckle reduction produces better images. Normalization

was also proposed in other studies using blood echogenicity as a reference and applied in carotid artery images [29]. In [5], [13], it was shown that normalization improves the image comparability by reducing the variability introduced by different gain settings, different operators, and different equipment. It should be noted that the order of applying these processes (normalization and speckle reduction filtering) affects the final result. Based on unpublished results, we have observed that by applying first speckle reduction filtering and then normalization produces distorted edges. The preferred method is to apply first normalization and then speckle reduction filtering for better results.

In recent studies [6], [7], [4] it was shown that the preprocessing of ultrasound images of the carotid artery with normalization and speckle reduction filtering improves the performance of the automated segmentation of the intima media thickness [7] and plaque [6]. More specifically, it was shown in [7] that a smaller variability in segmentation results was observed when performed on images after normalization and speckle reduction filtering, compared with the manual delineation results made by two medical experts. Furthermore, in another study [8], we have shown that speckle reduction filtering improves the percentage of correct classifications score of symptomatic and asymptomatic images of the carotid. Speckle reduction filtering was also investigated by other researchers on ultrasound images of liver and kidney [30] and on natural scenery [14], using an adaptive two-dimensional filter similar to the *lsmv* speckle reduction filter used in this study. In these studies, [14], [30] speckle reduction filtering was evaluated based only on visual perception evaluation made by the researches.

Verhoefen et al. [31] applied mean and median filtering in simulated ultrasound images and in ultrasound images with blood vessels. The lesion-signal-to-noise ratio was used in order to quantify the detectability of lesions after filtering. Filtering was applied on images with fixed

and adaptive size windows in order to investigate the influence of the filter window size. It was shown that the difference in performance between the filters was small but the choice of the correct window size was important. Kotropoulos et al. [32], applied adaptive speckle reduction filtering in simulated tissue mimicking phantom, and liver ultrasound B-mode images, where it was shown that the proposed maximum likelihood estimator filter was superior than the mean filter.

Although in this study, speckle has been considered as noise, there are other studies where speckle, approximated by the Rayleigh distribution, was used to support automated segmentation. Specifically, in [17], an automated luminal contour segmentation method based on a statistical approach, was introduced whereas in [19], ultrasound intravascular images were segmented using knowledge-based methods. Furthermore, in [18] a semi automatic segmentation method for intravascular ultrasound images, based on gray-scale statistics of the image was proposed, where the lumen, IMT and the plaque were segmented in parallel by utilizing a fast marching model.

Some statistical measures, as shown in the upper part of Table 1-2, were better after normalization and some others, shown in the bottom part of Table 1-2, were better after speckle reduction. Table 1-2 also shows that the contrast was higher for the NF and N images on both scanners and was significantly different (S) after normalization and speckle reduction filtering. All other measures presented in Table 1-2 were comparable showing that better values were obtained on the NDS images. Moreover it was shown that the entropy that is a measure of the information content of the image [22] was higher for both scanners in the cases of the NDS and DS images. Significantly different entropy values were obtained mostly after normalization and speckle reduction filtering. Low entropy images have low contrast and large areas of pixels with same or similar gray level values. An image which is perfectly

flat will have a zero entropy. On the other hand, high entropy images have high contrast and thus higher entropy values [25]. The ATL HDI-5000 scanner produces therefore images with higher information content. The entropy was also used in other studies to classify the best liver ultrasound images [33], where it was shown that the experts rated images with higher entropy values better. In [21] entropy and other texture features were used to classify between symptomatic and asymptomatic carotid plaques for assessing the risk of stroke. It was also shown [13] that, asymptomatic plaques tend to be brighter, have higher entropy and more coarse, whereas symptomatic plaques tend to be darker, have lower entropy (i.e. the image intensity in neighbouring pixels is more unequal) and are less coarse. Furthermore, it is noted that texture analysis could also be performed on smaller areas of the carotid artery, such as the plaque, after segmentation [7], [6].

In previous studies [2], [3], [9], [10], [11], [26], [27] researchers evaluated image quality on natural scenery images using either only the visual perception by experts or some of the evaluation metrics presented in Table 1-3. In this study, MSE and RMSE values were in the range of 0.4 to 2.0, for all cases, Err3, Err4, SNR, PSNR, Q, and SSIN were better between the NF-N images for both scanners, showing that normalization increases the values of these measures. In [15], speckle reduction filtering was investigated on ultrasound images of the heart. The MSE values reported after speckle reduction for the adaptive weighted median filtering, wavelet shrinkage enhanced filter, wavelet shrinkage filter, and non-linear coherence diffusion were 289, 271, 132, and 121 respectively. Loupas et al. [34] applied an adaptive weighted median filter for speckle reduction in ultrasound images of the liver and gallbladder and used the speckle index and the MSE for comparing the filter with a conventional mean filter. It was shown that the filter improves the resolution of small structures in the ultrasound images. It was also documented in [3], [26], [35], that the MSE, RMSE, SNR and PSNR measures are not objective for image quality evaluation and that they

do not correspond to all aspects of the visual perception nor they correctly reflect artifacts [24], [27].

Recently the Q [3], and SSIN [26], measures for objective image quality evaluation have been proposed. The best values obtained in this study, were $Q=0.95$ and $SSIN=0.95$ and were obtained for the NF-N images for both scanners. These results were followed with $Q=0.73$, and $SSIN=0.92$ in the case of NF-NDS for the HDI ATL-3000 scanner, and $Q=0.72$, and $SSIN=0.94$ in the case of NF-DS for the HDI ATL-5000 scanner. In [3], where natural scenery images were distorted by speckle noise, the values for Q reported were 0.4408, whereas the values for Q after contrast stretching were 0.9372.

Finally in some other studies [36], [37], a natural scene statistic model was proposed for assessing the quality of JPEG2000 compressed images blindly, without having available the reference image.

The methodology presented in this study may also be applicable in future studies, to the evaluation of new ultrasound and telemedicine systems in order to compare their performance. It is also important to note that the methodology consists of a combination of subjective and objective measures that should be combined together for a proper image quality evaluation result [27].

Concluding, the results of this study showed that normalization and speckle reduction filtering are important processing steps favoring image quality. Additionally, the usefulness of the proposed methodology based on quality evaluation metrics combined with visual evaluation in ultrasound systems and in wireless telemedicine systems needs to be further investigated.

Acknowledgment

This work was partly funded through the project *Integrated System for the Support of the Diagnosis for the Risk of Stroke (IASIS)*, of the 5th Annual Program for the Financing of Research of the Research Promotion Foundation of Cyprus 2002-2005, as well as, through the project *Integrated System for the Evaluation of Ultrasound Imaging of the Carotid Artery (TALOS)*, of the Program for Research and Technological Development 2003-2005, of the Research Promotion Foundation of Cyprus.

References

- [1] McDicken N., "Diagnostic ultrasonics", 3rd ed., Churchill Livingstone, Inc. NY, 1991.
- [2] Krupinski E., Kundel H., Judy P., and Nodine C., "The medical image perception society, key issues for image perception research," *Radiology*, vol. 209, pp. 611-612, 1998.
- [3] Wang Z., and Bovik A., "A Universal quality index," *IEEE Signal Proc. Letters*, vol. 9, no. 3, pp. 81-84, 2002.
- [4] Loizou C. P., Pattichis C. S., Pantziaris M., Tyllis T., Nicolaides A., "Quantitative quality evaluation of ultrasound imaging in the carotid artery," *Med. Biol. Eng. Comput.*, vol. 44, no. 5, pp. 414-426, 2006.
- [5] Elatrozy T., Nicolaides A., Tegos T., Zarka A. Z., Griffin M., and Sabetai M., "The effect of B-mode ultrasonic image standardization of the echodensity of symptomatic and asymptomatic carotid bifurcation plaque," *Int. Angiol.*, vol. 7, no. 3, pp. 179-186, 1998.
- [6] Loizou C. P., Pattichis C. S., Istepanian R. S. H., Pantziaris M., and Nicolaides A., "Atherosclerotic carotid plaque segmentation," *Proceedings of the 26th Annual Int. Conf. IEEE-EMBS*, pp. 1403-1406, 2004.
- [7] Loizou C. P., Pattichis C. S., Istepanian R. S. H., and Pantziaris M., "Intima media segmentation of the carotid artery," *IEEE Int. X Medit. Conf. Medicion on Medical and Biological Engineering*, POS-03, 499, pp. 1-4, 2004.
- [8] Loizou C. P., Pattichis C. S., Christodoulou C. I., Istepanian R. S. H., Pantziaris M., and Nicolaides A., "Comparative evaluation of despeckle filtering in ultrasound imaging of the carotid artery," *IEEE Trans. Ultras. Ferroel. Freq. Control*, vol. 52, no.10, pp. 653-669, 2005.
- [9] Ahumada A., and Null C., "Image quality: A multidimensional problem," In: Watson A.B., editor. *Digital Images and human vision*, Bradford Press: Cambridge Mass, pp. 141-148, 1993.
- [10] Fedorovskaya E. A., De Ridder H., and Blomaert F. J., "Chroma variations and perceived quality of color images and natural scenes," *Color Research and Application*, vol. 22, no. 2, pp. 96-110, 1997.
- [11] Deffner G., "Evaluation of display image quality: Experts vs. non-experts", In: *Symposium Society for Information and Display Digest*, vol. 25, pp. 475-478, 1994.
- [12] A Philips medical system company, "Comparison of image clarity, SonoCT real-time compound imaging versus conventional 2D ultrasound imaging," ATL Ultrasound, Report, 2001.
- [13] Kyriakou E., Pattichis M. S., Christodoulou C., Pattichis C. S., Kakkos S., Griffin M., and Nicolaides A., "Ultrasound imaging in the analysis of carotid plaque morphology for the assessment of stroke. In *Plaque Imaging: Pixel to molecular level*," ed. Suri JS, Yuan C, Wilson DL, Laxminarayan S, IOS press, pp. 241-275, 2005.
- [14] Lee J. S. (1980): "Digital image enhancement and noise filtering by use of local statistics," *IEEE Trans. Pattern Anal. Mach. Intellig.*, vol. 2, no.2, pp. 165-168, 1980.
- [15] Abd-Elmonien K., Youssef A. B., and Kadah Y., "Real-Time Speckle reduction and coherence enhancement in ultrasound imaging via nonlinear anisotropic diffusion," *IEEE Trans. on Biomed. Eng.*, vol. 49, no. 9, pp. 997-1014, 2002.
- [16] Dutt V., "Statistical analysis of ultrasound echo envelope", Ph.D. dissertation, Mayo Graduate School, Rochester, MN, 1995.
- [17] Brusseau E., De Korte C. L., Mastick F., Schaar J., and Van der Steen A. F. W., "Fully automatic luminal contour segmentation in intracoronary ultrasound imaging-A statistical approach," *IEEE Trans. Med. Imag.*, vol. 23, 5, pp. 554-566, 2004.
- [18] Cardinal M. R., Meunier J., Soulez G., Thérasse E., and Cloutier G., "Intravascular Ultrasound Image Segmentation: A Fast-Marching Method," *Proc., MICCAI, LNCS 2879*, pp. 432-439, 2003.
- [19] Olszewski M. E., Wahle A., Vigmostad S. C., and Sonka M., "Multidimensional segmentation of coronary intravascular ultrasound images using knowledge-based methods," *Medical Imaging: Image Processing, Proc SPIE*, vol. 5747, pp. 496-504, 2005.
- [20] Nicolaides A., Sabetai M., Kakkos S. K., Dhanjil S., Tegos T., and Stevens J. M., "The Asymptomatic carotid stenosis and risk of stroke study," *Int. Angiol.*, vol. 22, no. 3, pp. 263-272, 2003.
- [21] Christodoulou C. I., Pattichis C. S., Pantziaris M., and Nicolaides A., "Texture based classification of atherosclerotic carotid plaques," *IEEE Trans. Med. Imag.*, vol. 22, 7, pp. 902-912, 2003.
- [22] Haralick R. M., Shanmugam K., and Dinstein I., "Texture features for image classification," *IEEE Trans. Systems Man., and Cybernetics*, vol. 3, pp. 610-621, 1973.
- [23] Netravali A. N., and Haskell B. G., "Digital Pictures: Representation, Compression and Standards," 2nd ed., New York, Plenum, 2000.
- [24] Chen T. J., Chung K. -S., Chen S. C., Hwang I. -M., and Jan M. -L., "A novel image quality index using Moran I statistics," *Physics in Medicine and Biology*, vol. 48, pp. 131-137, 2003.
- [25] Gonzalez R., and Woods R., "Digital Image Processing", 2nd ed., Prentice-Hall Inc., pp. 419-420, 2002.
- [26] Wang Z., Bovik A., Sheikh H., and Simoncelli E., "Image quality assessment: From error measurement to structural similarity," *IEEE Trans. Image Processing*, vol. 13, 4, pp. 600-612, 2004.
- [27] Winkler S., "Vision models and quality metrics for image processing applications," PhD thesis, Ecole Polytechnique Federale de Lausanne-Switzerland, 2000.
- [28] Sakrison D., "On the role of observer and a distortion measure in image transmission," *IEEE Trans. Communication*, vol. 25, pp. 1251-1267, 1977.
- [29] Wilhelm J. E., Gronholdt M. L., Wiebe B., Jespersen S. K., Hansen L. K., and Sillesen H., "Quantitative analysis of ultrasound B-Mode images of carotid atherosclerotic plaque: Correlation with visual classification and histological examination," *IEEE Trans. Med. Imag.*, vol. 17, no. 6, pp. 910-922, 1998.
- [30] Bamber J. C., and Daft C., "Adaptive filtering for reduction of speckle in ultrasonic pulse-echo images," *Ultrasonic*, vol. 24, pp. 41-44, 1986.

- [31] Verhoeven J. T. M. and Thijssen J. M., "Improvement of lesion detectability by speckle reduction filtering: A quantitative study," *Ultrasonic Imaging*, vol. 15, pp. 181-204, 1993.
- [32] Kotropoulos C., and Pitas I., "Optimum nonlinear signal detection and estimation in the presence of ultrasonic speckle," *Ultrasonic Imaging*, vol. 14, pp. 249-275, 1992.
- [33] Wu C. M., Chang C. Y., and Sheng H. K., "Texture features for classification of ultrasonic liver images," *IEEE Trans. Med. Imag.*, vol. 11, no.3, pp.141-152, 1992.
- [34] Loupas T., McDicken W. N., and Allan P. L., "An adaptive weighted median filter for speckle suppression in Medical ultrasonic images," *IEEE Trans. Circuits and Systems*, vol. 36, pp.129-135, 1989.
- [35] Pommert A., and Hoehne K., "Evaluation of image quality in medical volume visualization: The state of the art," Takeyoshi Dohi, Ron Kikinis (eds.). *Medical Image Computing and Computer-Assisted Intervention, Proc., MICCAI, Part II, Lecture Notes in Computer Science 2489*, pp. 598-605, Springer Verlag, Berlin, 2002.
- [36] Sheikh H. R., Bovik A. C., and Cormack L., "No-reference quality assessment using natural scene statistics: JPEG 2000," *IEEE Trans. Image Proc.*, vol. 14, no. 11, pp. 1918-1927, Nov. 2005.
- [37] Sheikh H. R., Bovik A. C., and Veciana C., "An information fidelity criterion for image quality assessment using natural scene statistics," *IEEE Trans. Image Proc.*, vol. 14, no. 12, pp. 2117-2128, Dec. 2005.

LIST OF TABLES

Table 1-1 Visual perception evaluation for the image quality on 80 images processed from each scanner for the original (NF), speckle reduction (DS), normalized (N), and normalized speckle reduction (NDS). © 2006 EMBEC, Quantitative quality evaluation of ultrasound imaging in the carotid artery," *Med. Biol. Eng. Comput.*," vol. 44, no. 5, pp. 414-426, 2006.

Table 1-2 Statistical and texture features (Mean values for 80 images processed from each scanner) for the original (NF), speckle reduction (DS), normalized (N) and normalized speckle reduction (NDS) images. C. P. Loizou et al., Quantitative quality evaluation of ultrasound imaging in the carotid artery," *Med. Biol. Eng. Comput.*," vol. 44, no. 5, pp. 414-426, 2006, © 2006 EMBEC.

Table 1-3 Image quality evaluation metrics between the original-speckle reduction (NF-DS), original-normalized (NF-N), original-normalized speckle reduction (NF-NDS) and the normalized-normalized speckle reduction (N-NDS) images. C. P. Loizou et al., Quantitative quality evaluation of ultrasound imaging in the carotid artery," *Med. Biol. Eng. Comput.*," vol. 44, no. 5, pp. 414-426, 2006, © 2006 EMBEC.

Table 1-4 Summary findings of image quality evaluation in ultrasound imaging of the carotid artery. C. P. Loizou et al., Quantitative quality evaluation of ultrasound imaging in the carotid artery," *Med. Biol. Eng. Comput.*," vol. 44, no. 5, pp. 414-426, 2006, © 2006 EMBEC.

Table 1-1

Visual perception evaluation for the image quality on 80 images processed from each scanner for the original (NF), speckle reduction (DS), normalized (N), and normalized speckle reduction (NDS). C. P. Loizou et al., Quantitative quality evaluation of ultrasound imaging in the carotid artery," *Med. Biol. Eng. Comput.*," vol. 44, no. 5, pp. 414-426, 2006, © 2006 EMBEC.

<i>Ultrasound scanner</i>	<i>Visual perception score</i>							
	<i>ATL HDI-3000</i>				<i>ATL HDI-5000</i>			
<i>Preprocessing procedure</i>	<i>NF</i>	<i>DS</i>	<i>N</i>	<i>NDS</i>	<i>NF</i>	<i>DS</i>	<i>N</i>	<i>NDS</i>
Angiologist	30	43	69	72	26	42	59	70
Neurovascular specialist	41	56	54	71	49	53	59	72
Average	36	50	62	72	38	48	59	71

Table 1-2

Statistical and texture features (Mean values for 80 images processed from each scanner) for the original (NF), speckle reduction (DS), normalized (N) and normalized speckle reduction (NDS) images. C. P. Loizou et al., Quantitative quality evaluation of ultrasound imaging in the carotid artery," *Med. Biol. Eng. Comput.*," vol. 44, no. 5, pp. 414-426, 2006, © 2006 EMBEC.

Scanner	ATL HDI-3000				ATL HDI-5000			
	NF	DS	N	NDS	NF	DS	N	NDS
Images								
	Statistical features (SF)							
Mean	22.13	21.78	26.81	26.46	22.72	22.35	27.81	27.46
Median	3.07	4.53	3.56	5.07	3.73	5.23	4.59	6.07
Stand. deviation	40.67	36.2	45.15	41.48	41.22	36.7	45.9	42.31
Skewness (σ^3)	2.88	2.49	2.23	2.00	2.84	2.45	2.17	1.94
Kurtosis (σ^4)	12.43	10.05	7.94	6.73	12.13	9.82	7.56	6.43
Speckle Index	0.29	0.27	0.25	0.24	0.28	0.27	0.24	0.23
	SGLDM-Range values							
Entropy	0.24	0.34	0.25	0.34	0.40	0.48	0.41	0.48
Contrast	667	309	664	303	618	302	595	287
ASM	0.36	0.35	0.38	0.37	0.37	0.33	0.39	0.35

Table 1-3

Image quality evaluation metrics between the original-speckle reduction (NF-DS), original-normalized (NF-N), original-normalized speckle reduction (NF-NDS) and the normalized-normalized speckle reduction (N-NDS) images. C. P. Loizou et al., Quantitative quality evaluation of ultrasound imaging in the carotid artery," *Med. Biol. Eng. Comput.*," vol. 44, no. 5, pp. 414-426, 2006, © 2006 EMBEC.

Evaluation metrics	ATL HDI-3000				ATL HDI-5000			
	NF-DS	NF-N	NF-NDS	N-NDS	NF-DS	NF-N	NF-NDS	N-NDS
MSE	1.4	1.3	2.0	1.3	1.2	0.3	1.9	1.3
RMSE	1.2	0.4	1.4	1.1	1.1	0.5	1.3	1.1
Err 3	3.8	0.8	3.9	3.5	3.7	0.8	3.8	3.5
Err 4	8.2	1.2	8.0	7.5	8.1	1.3	7.8	7.5
GAE	0	0	0	0	0	0	0	0
SNR	5.0	16.5	4.8	5.4	5.3	15.9	5.1	5.4
PSNR	48.0	59	45.6	44.6	47.4	58.5	46	44.6
Q	0.7	0.93	0.73	0.69	0.72	0.93	0.72	0.71
SSIN	0.9	0.95	0.92	0.83	0.94	0.95	0.91	0.83

Table1-4

Summary findings of Image quality evaluation in ultrasound imaging of the carotid artery. C. P. Loizou et al., Quantitative quality evaluation of ultrasound imaging in the carotid artery," *Med. Biol. Eng. Comput.*," vol. 44, no. 5, pp. 414-426, 2006, © 2006 EMBEC.

Ultrasound scanner	Visual evaluation Table 1-1				Statistical and texture analysis Table 1-2				Image quality evaluation Table 1-3			
	NF	DS	N	NDS	NF	DS	N	NDS	NF-DS	NF-N	NF-NDS	N-NDS
ATL HDI-3000				++				++			++	+
ATL HDI-5000				++			+	++		+	++	

LIST OF FIGURES

Figure 1-1: Ultrasound carotid artery images of the original (NF), speckle reduction (DS), normalized (N), and normalized speckle reduction (NDS), of the ATL HDI-3000, and ATL HDI-5000 shown in the left and right columns respectively.

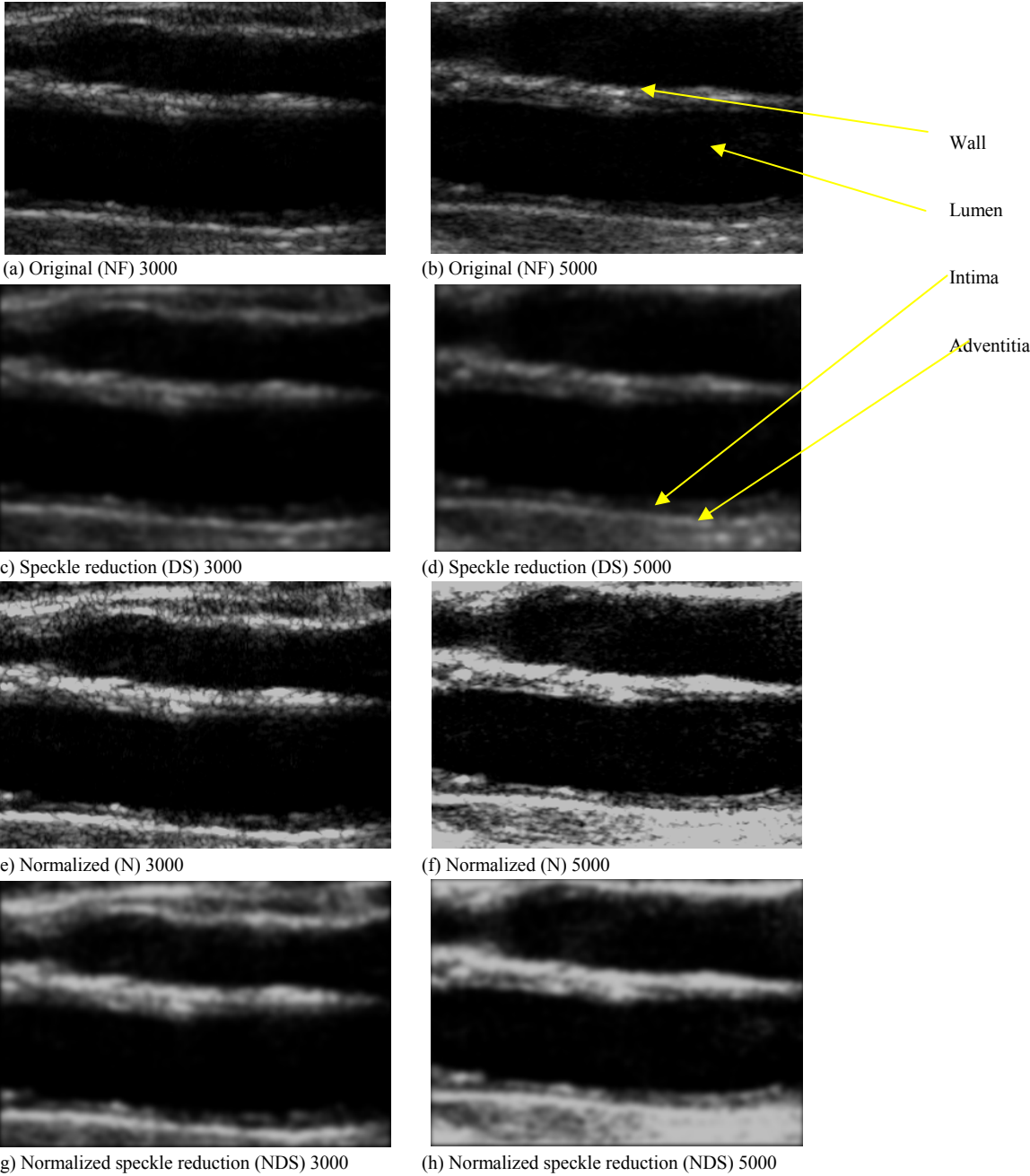


Figure 1-1 Ultrasound carotid artery images of the original (NF), speckle reduction (DS), normalized (N), and normalized speckle reduction (NDS), of the ATL HDI-3000, and ATL HDI-5000 shown in the left and right columns respectively.