

ERATOSTHENES Centre of  
Excellence (ECoE)



# 1st virtual EXCELSIOR International Technical Workshop

15 July 2020

# Copernicus SEA

@excelsior2020eu



Denis Bruckert & Marcello Moretti  
European Union Satellite Centre



This project has received funding from the European Union's Horizon 2020 research and innovation programme under grant agreement No 857510



This project has received funding from the Government of the Republic of Cyprus through the Directorate General of the European's Programmes, Coordination and Development

CONSORTIUM



## The EU SatCen

### Who we are

- Agency of the EU Council
- HQ in Torrejón de Ardoz (ES)
- Primary User of EO Satellite Data
- Role of Service Provider
- GEOINT operational instrument



### Our Mission

To support the decision making and actions of the EU in the field of the Common Foreign and Security Policy by providing products and services resulting from the exploitation of relevant space assets and collateral data

### Our Current Engagements



Operations



Regional Conflicts



Piracy



Migration



Proliferation  
WMD



Humanitarian  
Aid

## Sensors

### EU Sensors



Sentinel-1



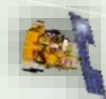
Sentinel-2



Sentinel-3

### Governmental

Hélios II



COSMO SkyMed



SARLupe



### Commercial



Deimos 1



Deimos 2

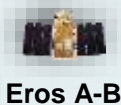


Spot 6-7



Spot 5

RapidEye



Eros A-B



TerraBella



Kompsat 3



TerraSAR-X



COSMO SkyMed



Pleiades



GeoEye



WV 1



WV 2



WV 3



WV 4



## Main Analysis Domains



### Security Surveillance

- Treaty verification
- Border control
- Global terrorism
- Piracy and coastal analysis



### Contingency Planning

- Support to evacuation operations
- Rapid mapping



### Humanitarian Aid

- Refugee camps / IDPs
- State failure and insurgency
- Man-made and natural disasters



### Critical Infrastructure

- Elements-at-risk mapping
- Threat analysis and Vulnerability Assessment



### Military Capabilities

- Analysis of military activity / deployed forces
- Battle Damage Assessment



### Weapons of Mass Destruction

- Arms control and non-proliferation
- Chemical weapons

Standard driven



Quality oriented



Interoperability



Users satisfaction



## Introduction – Copernicus Services



Atmosphere  
Monitoring



Maritime  
Environment  
Monitoring



Land Monitoring



Climate Change



Emergency  
Management



Security



Border  
Surveillance



Maritime  
Surveillance



Support to EU  
External Action



# Copernicus – Security Services



- Synergies (services & agencies).
- Common view on development.
- Share future projection.
- User Access to services.

# Involvement in Copernicus

	User	Provider	Involvement in Research and Innovation
<b>Copernicus</b>	Data Infrastructure	Support to EU External Action Border Surveillance (via FRONTEX)	Service Evolution for FRONTEX (Border Surveillance) and SEA (Support to EU External Action)  Long term evolution taken into account in next MFF  Expression of needs for Access to Data, New Sensors and New Processing Capabilities

## From R&I Projects to Operations







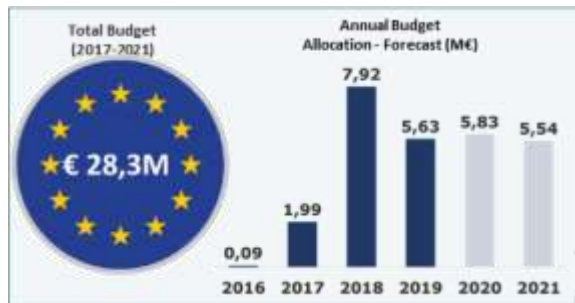
Security

# Introduction – Copernicus SEA



The **EU Satellite Centre** is the Copernicus Entrusted Entity for the implementation of the Support to EU External Action Services.

Operations as from May 2017



17 October 2016

Ms. Lowri Evans (Director General – DG-GROW) and Mr. Pascal Legai (Executive Director – SATCEN) sign the Delegation Agreement

<https://sea.security.copernicus.eu/>





Security

# Application domains

The Copernicus SEA service finds application in a number of domains related to European policies in the external action field. These domains provide the context for specific use cases showing how the products can service various institutional levels to support strategic decision-making and planning, as well as operations and intervention.



Support to humanitarian aid



Rule of law



Stability and resilience for development



Security of EU citizens abroad



Crisis, conflict and critical assets



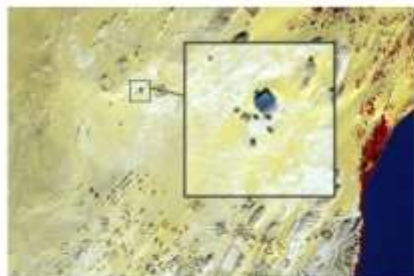
Cultural heritage



Security

# The Copernicus SEA Categories

The Copernicus SEA is conceived as a responsive, customizable service, in which user needs are evaluated by an expert team which recommends a solution based on geoinformation products. The products showcased in the following pages represent some common categories of user needs, and provide insight into the range and flexibility of the service's capabilities.



Activity Report



Support to Evacuation Plan



Road Network Status Assessment



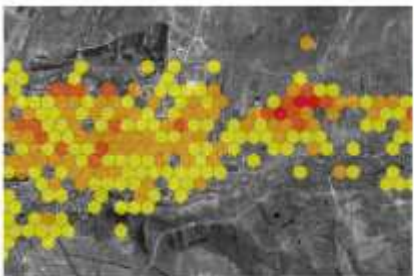
Camp Analysis



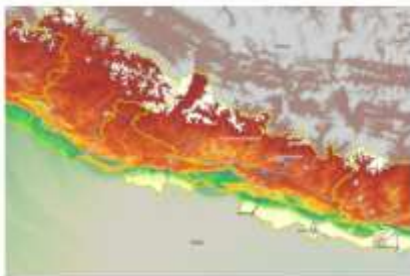
Critical Infrastructure Analysis



Non-EU Border Map



Conflict Damage Assessment



Crisis Situation Picture



Reference Map



Security

# EXAMPLES





Security

# Camp Analysis

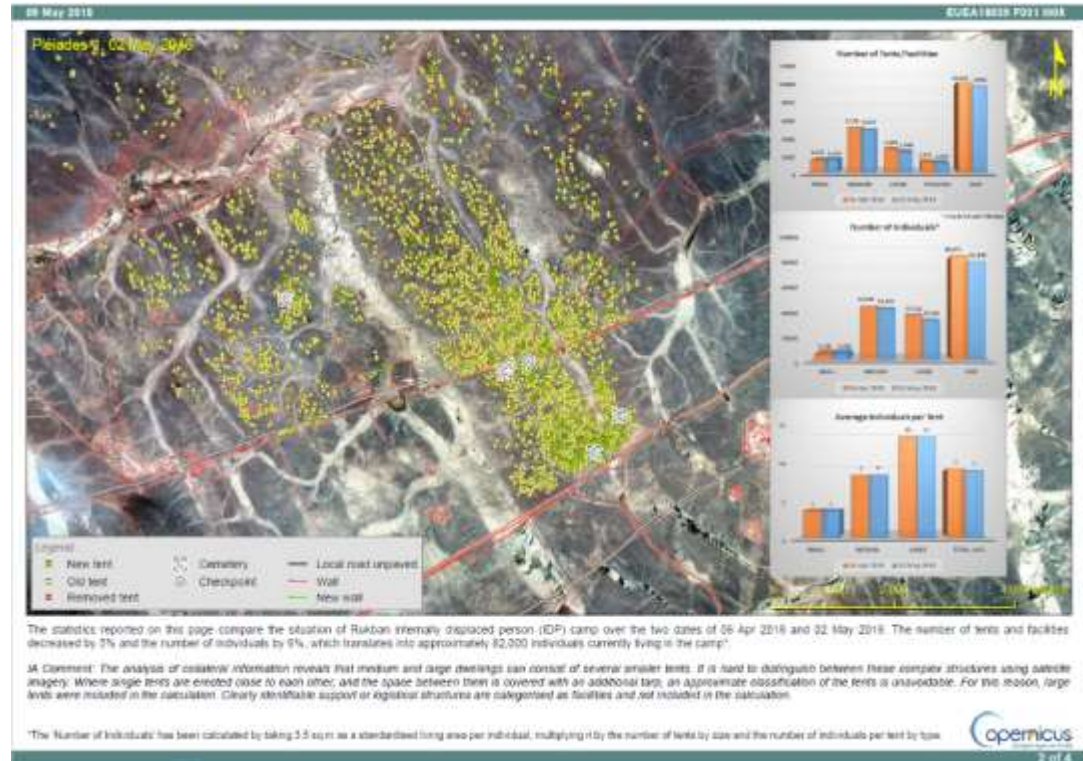
## Intelligence Analysis

First Impression Report



MONITORING OF MIGRATION ACTIVITIES

IDPs CAMPS ANALYSIS AND MONITORING





Security

# Non-EU Border Monitoring

## Activity Report Intelligence Analysis

### Non EU borders



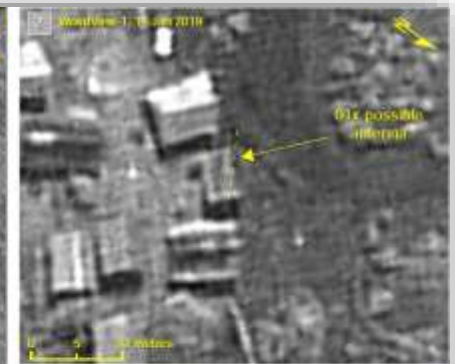
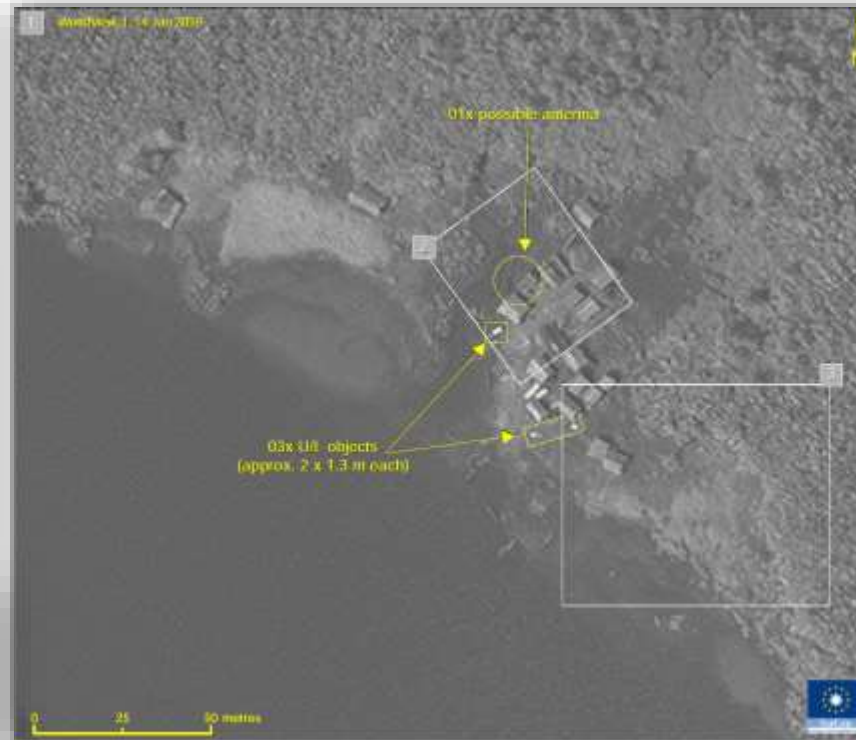


Security

# Law Enforcement

## Activity Report Intelligence Analysis

Law enforcement





Security

# Activity Analysis BN

## *Cultural Heritage. Keriya Mosque destruction , Xinjian, CHINA*

### Activity Report

*Intelligence Analysis*

Cultural Heritage



20 Nov 2002



09 Apr 2019





# Security analysis of Italian Civil protection PMA

Support activities conducted by the EU civil protection mechanism

## Activity Report

### Intelligence Analysis

Post event:  
Security situation  
Damage assessment





# Geospatial support for the preparation of evacuation plans

## Support to evacuation plans *Thematic maps to support civilian operations*

### Evacuation route between RP1 and Khartoum International Airport

Starting point: **RP1 on 33rd Avenue East**  
Destination: **Khartoum International Airport**

Total Distance: **1.7 km**  
Estimated minimum driving time: **5 minutes**

1. Head east on 33th Avenue East (40 m)
2. Turn left at the 1st cross street (150 m)
3. Turn right onto Africa Road (120 m)
4. At the roundabout, take the 1st exit onto Africa Road
5. Continue on Africa Road for 860 m and keep left
6. Turn left onto Airport Departure Street (540 m)
7. Destination is in front.

Starting point: **Khartoum International Airport**  
Destination: **RP1 on 33rd Avenue East**

Total Distance: **2.2 km**  
Estimated minimum driving time: **8 minutes**

1. Head northwest (240 m)
2. Turn left onto Africa Road (530 m)
3. Turn right onto Africa Road (670 m)
4. Make a turn onto Africa Road (270 m)
5. Turn right onto Avenue 39 (180 m)
8. Turn right onto 33th Avenue East (270 m)
9. Destination is on the left.





# PILOT PROJECT – Illegal Waste

Security

## Waste Types - Examples

This page depicts a detail of Area 1.

In the inset from 1 to 5 show a visual example of the four waste types and soil identified during the monitoring period has been reported.

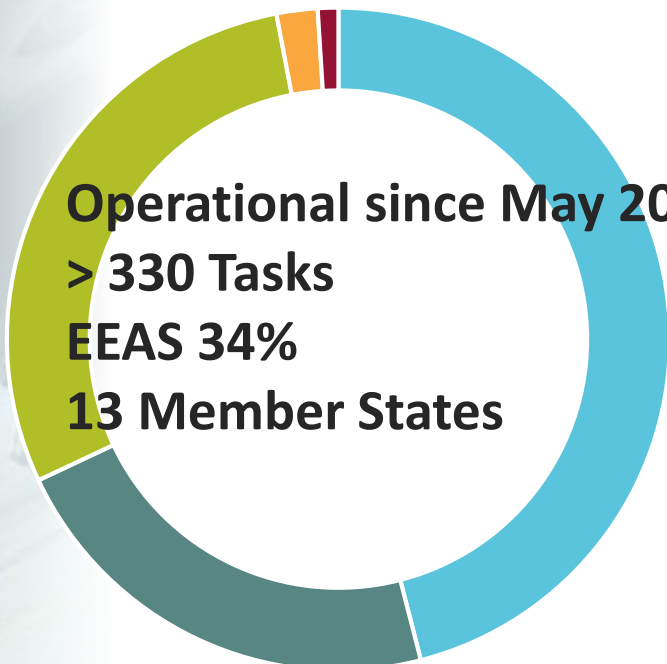
The image shows a ground view of the "storage or hazardous waste disposal area" where it is possible to identify the four main types of waste material.





Security

# User Community



**Base Case**

**Extending the User Base**  
*(in coordination with EC)*



**User Workshops**  
**Awareness Campaign to Member States**





Security

# Copernicus SEA Service Evolution



## Copernicus SEA Service Evolution

The Service Evolution activity aims at improving all components of the service by implementing projects for **direct-to-operations** actions.

### Better User Experience

e.g. Web GIS product delivery platform for visualization on-line

### New Products and Services

e.g. Environmental Crime Pilot Project for the to identify illegal waste management activities

### Production Improvements

e.g. New Product templates  
New templates for SatCen product to ease production and improve user experience

### State of the Art

e.g. Hovering Horizon Bimonthly publication with up-to-date R&D results and upcoming events.

### Pilot Projects

Operational Demonstrations on controlled environment with the participation of users.

## Involvement of EU Space Industry through ITT

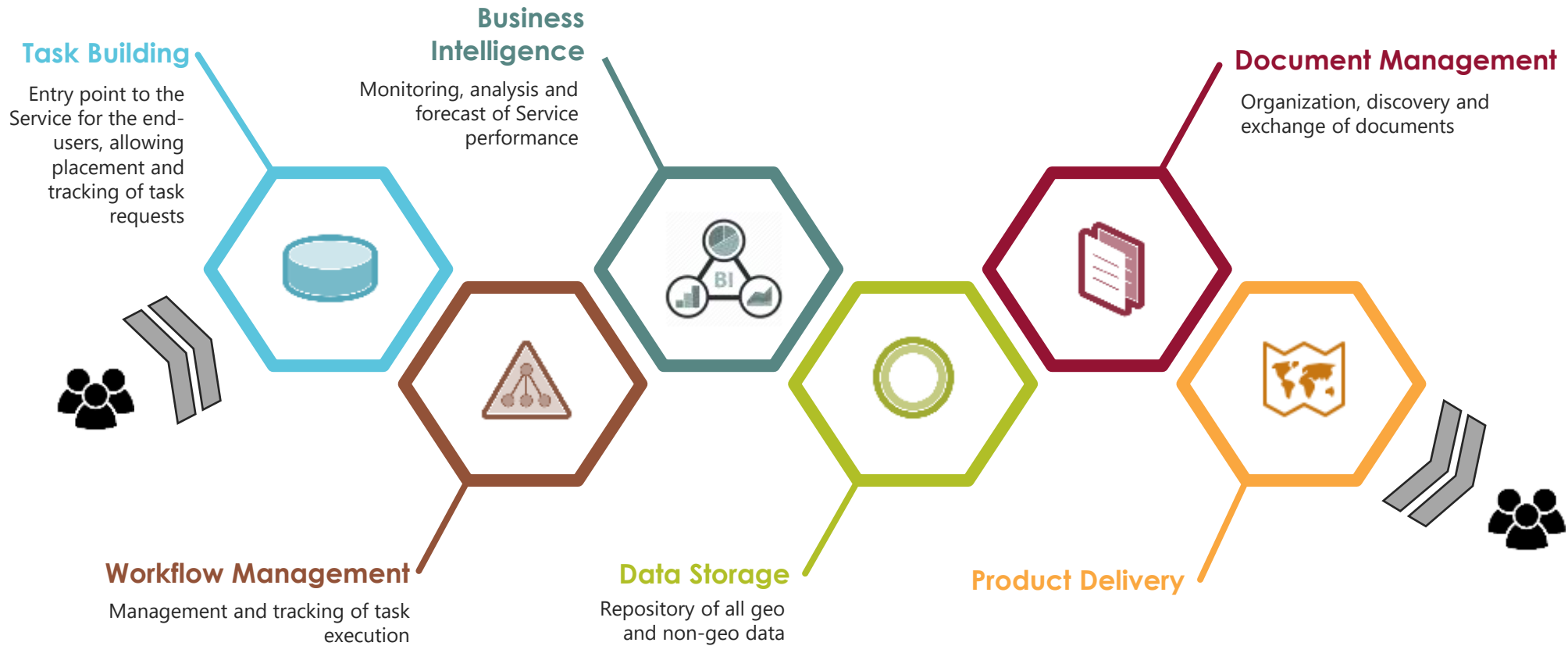
<https://sea.security.copernicus.eu/news-events/>





Security

# SEA Service Management Infrastructure





Security

## P e r s p e c t i v e s

- **Copernicus SEA Infrastructure** beginning 2021
- **Enlargement of User's community** (new users from Police forces, Fisheries, Commissions DGs, Environment compliance, etc)
- Fulfilment of a **wider range of needs** (pilot services, enlargement of portfolio),
- Preparing future engagements (Copernicus 2.0).
- **Synergies with EU Space Programme** (Galileo, GovsatCom, etc) and **Inter-Agencies Cooperation (SatCen, EMSA, FRONTEX, EFCA)**
- Copernicus SEA provides opportunities to support the **Security in the Eastern Med area.**

# THANK YOU FOR YOUR ATTENTION

Copyright © 2019 | EXCELSIOR, All rights reserved.

The project EXCELSIOR has received funding under Horizon 2020  
WIDESPREAD-01-2018-2019: Teaming Phase 2  
Coordination and support action  
Grant agreement No. 857510  
Proposal acronym: EXCELSIOR



This project has received funding from the European Union's Horizon 2020 research and innovation programme under grant agreement No 857510



This project has received funding from the Government of the Republic of Cyprus through the Directorate General of the European's Programmes, Coordination and Development

## CONSORTIUM



@excelsior2020eu



E-MAIL:  
[info@excelsior2020.eu](mailto:info@excelsior2020.eu)

WEBSITE:  
[www.excelsior2020.eu](http://www.excelsior2020.eu)