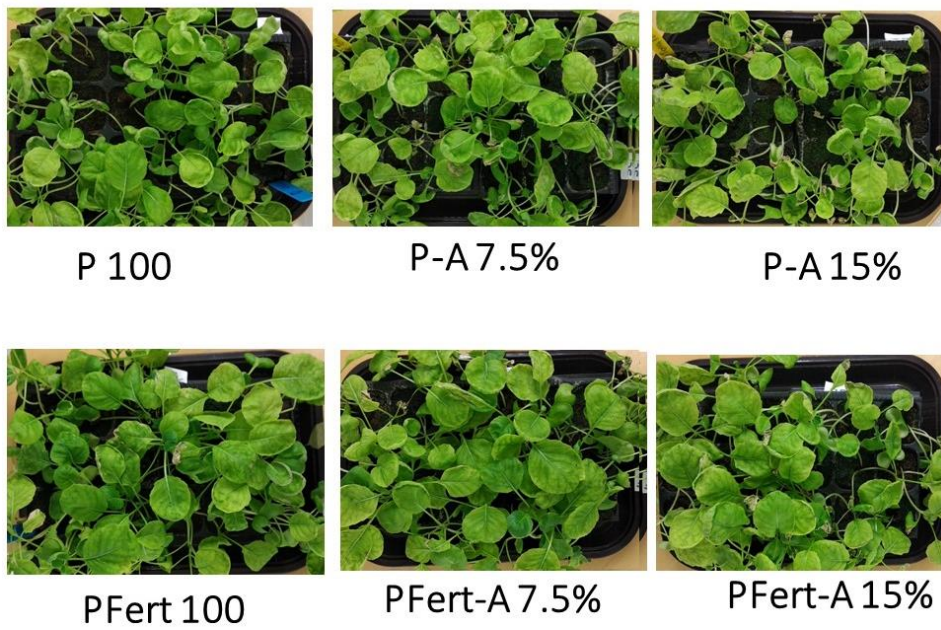
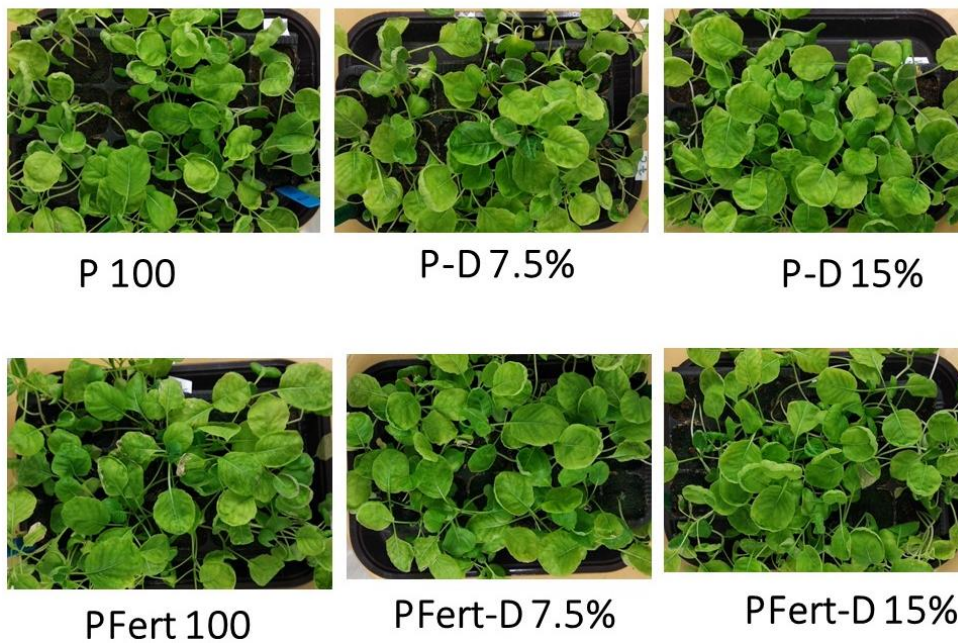


**Figure S1.** Cabbage cumulative seedling emergence in peat (P 100) with different biochar types (A, D) and ratio (7.5%, 15%) and mineral doses (with standard or with Fertilizers-Fert.). Error bars show SE (n=4).





**Figure S2.** Cabbage seedling production in peat (P 100) with different biochar types (A, D) and ratio (7.5%, 15%) and mineral doses (with standard or with additional Fertilizers-Fert.).